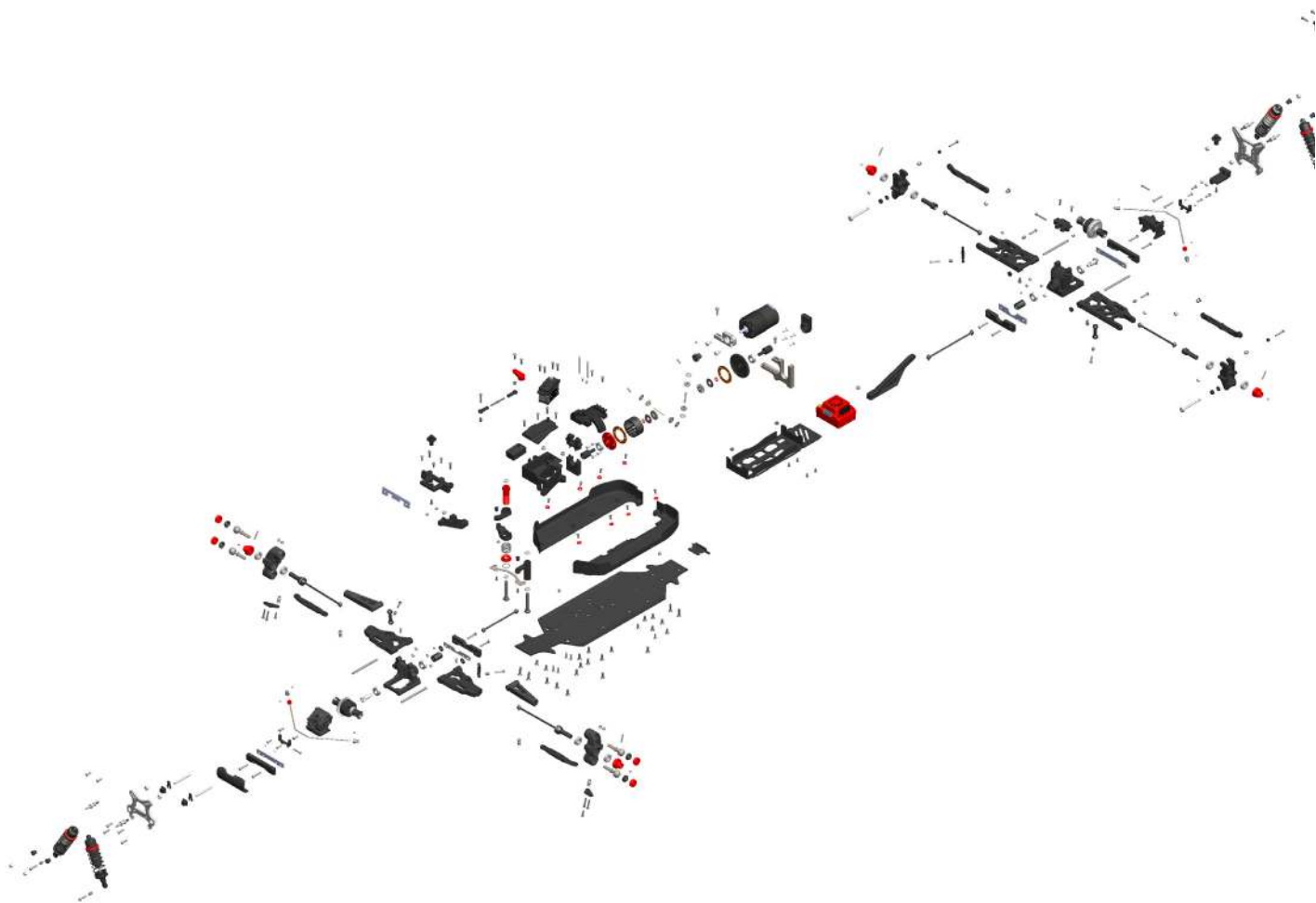




# EXPLODED VIEWS

VUES ÉCLATÉES • EXPLOSIONSZEICHNUNGEN  
• UITGEBREIDE ZICHTEN



**PYTHON** 

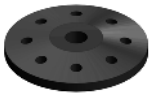
Version: 07-05-2021

[www.corally.com](http://www.corally.com)

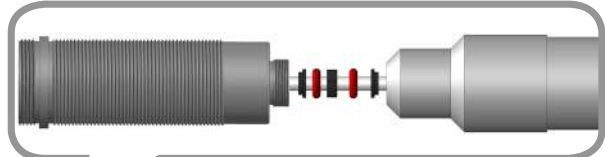
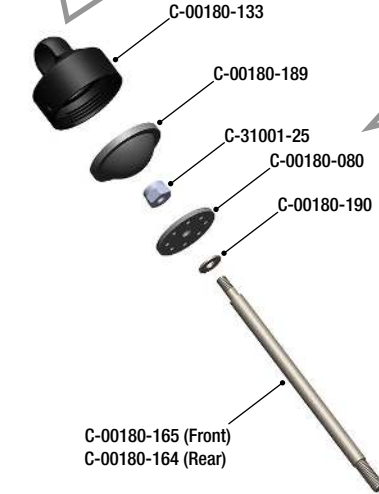


Do not overtighten the Shock Cap to prevent deformation of the silicone Shock Bladder.

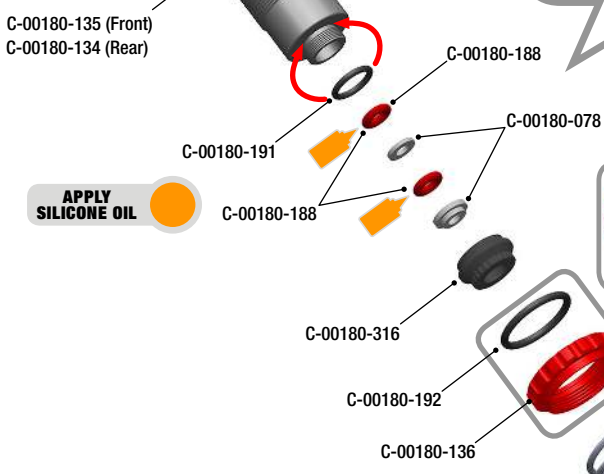
**C-00180-080 Shock Piston**



**Set content**  
 Shock Piston - 4x1.6  
 Shock Piston - 4x1.8  
 Shock Piston - 5x1.4  
 Shock Piston - 5x1.5  
 Shock Piston - 5x1.6  
 Shock Piston - 6x1.4  
 Shock Piston - 6x1.3  
 Shock Piston - 8x1.2  
 Shock Piston - 8x1.3



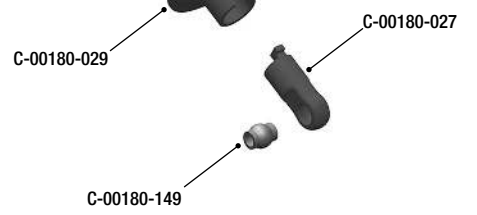
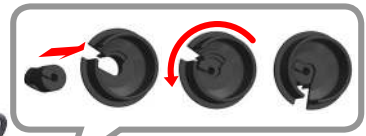
Place all small parts on a screwdriver (Ø3mm) and push them into the shock body. All parts will be properly aligned.



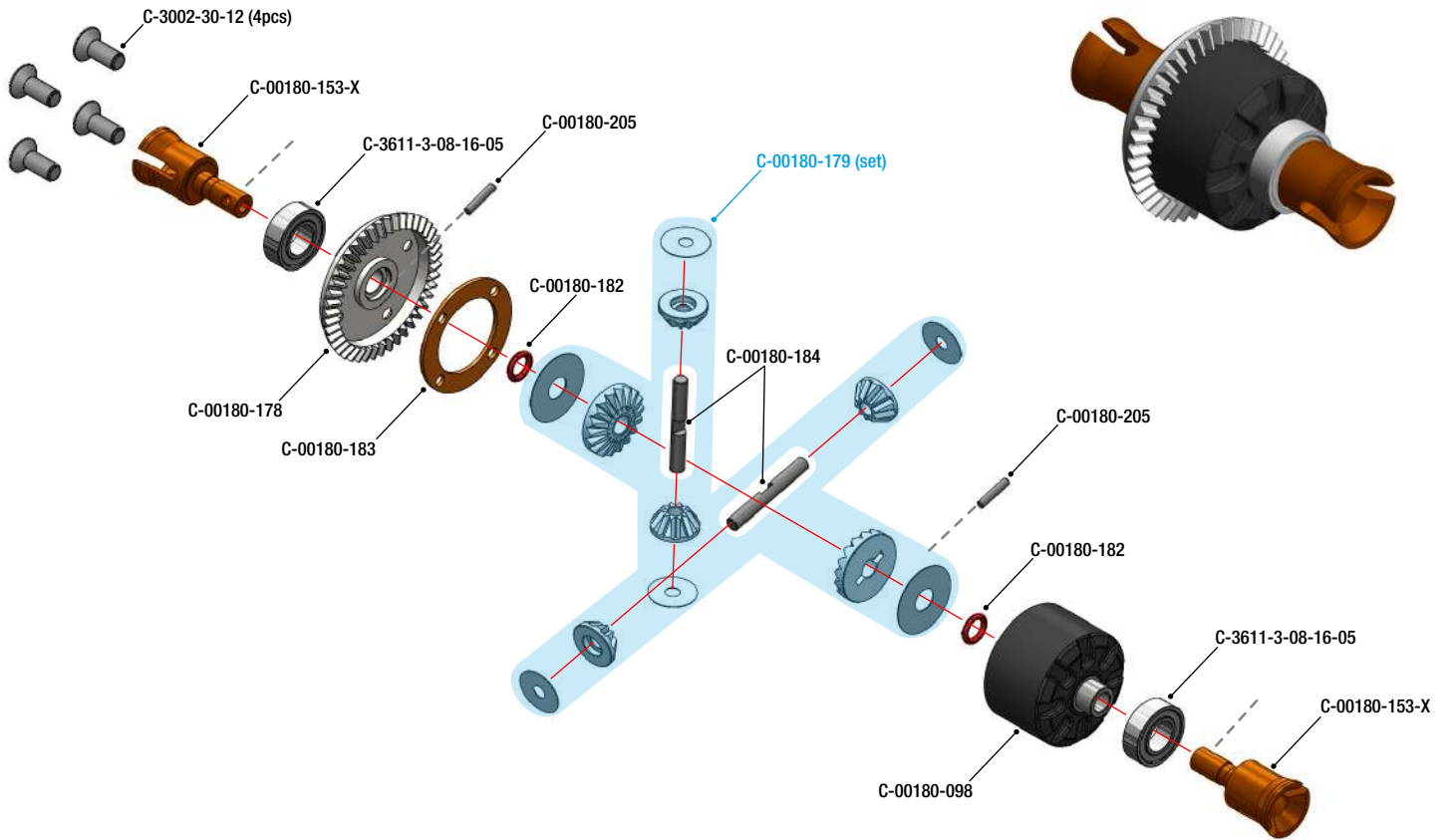
**APPLY SILICONE OIL**



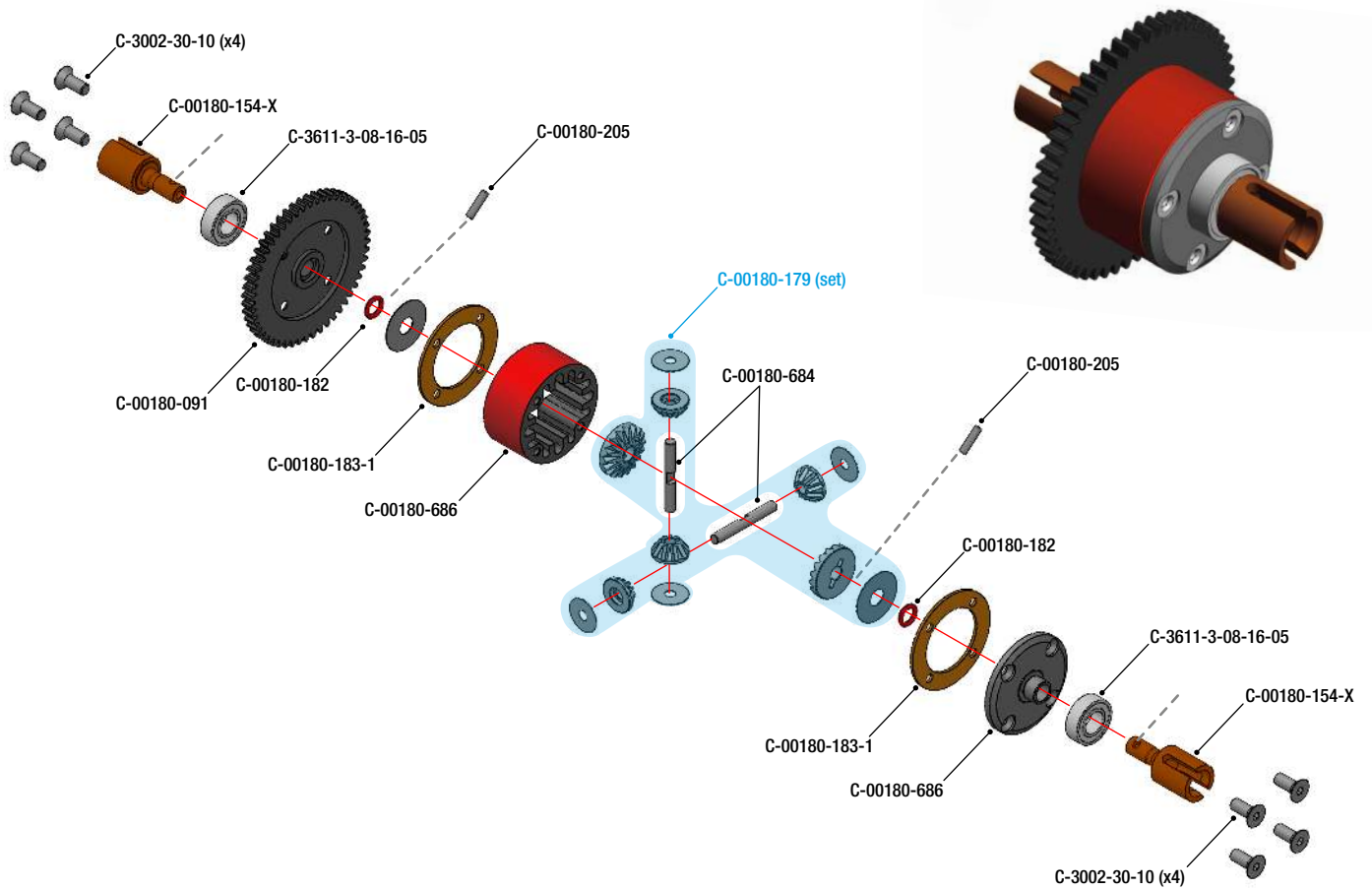

C-00180-290 (Front)  
 C-00180-287 (Rear)



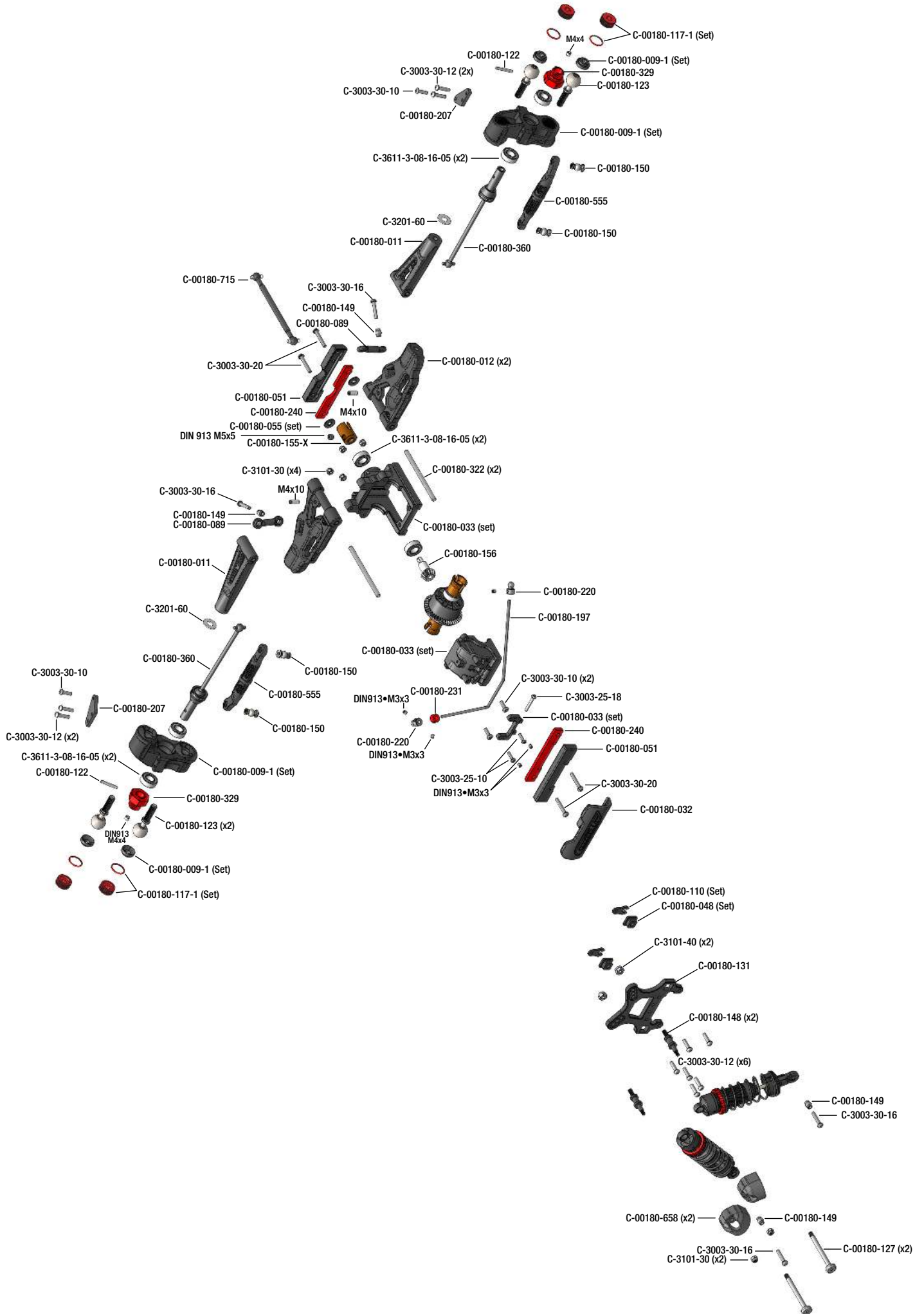
**FRONT & REAR DIFFERENTIAL - DIFFÉRENTIEL AVANT ET ARRIÈRE - DIFFERENTIAL VORNE UND HINTEN - VOOR & ACHTER DIFFERENTIEEL**



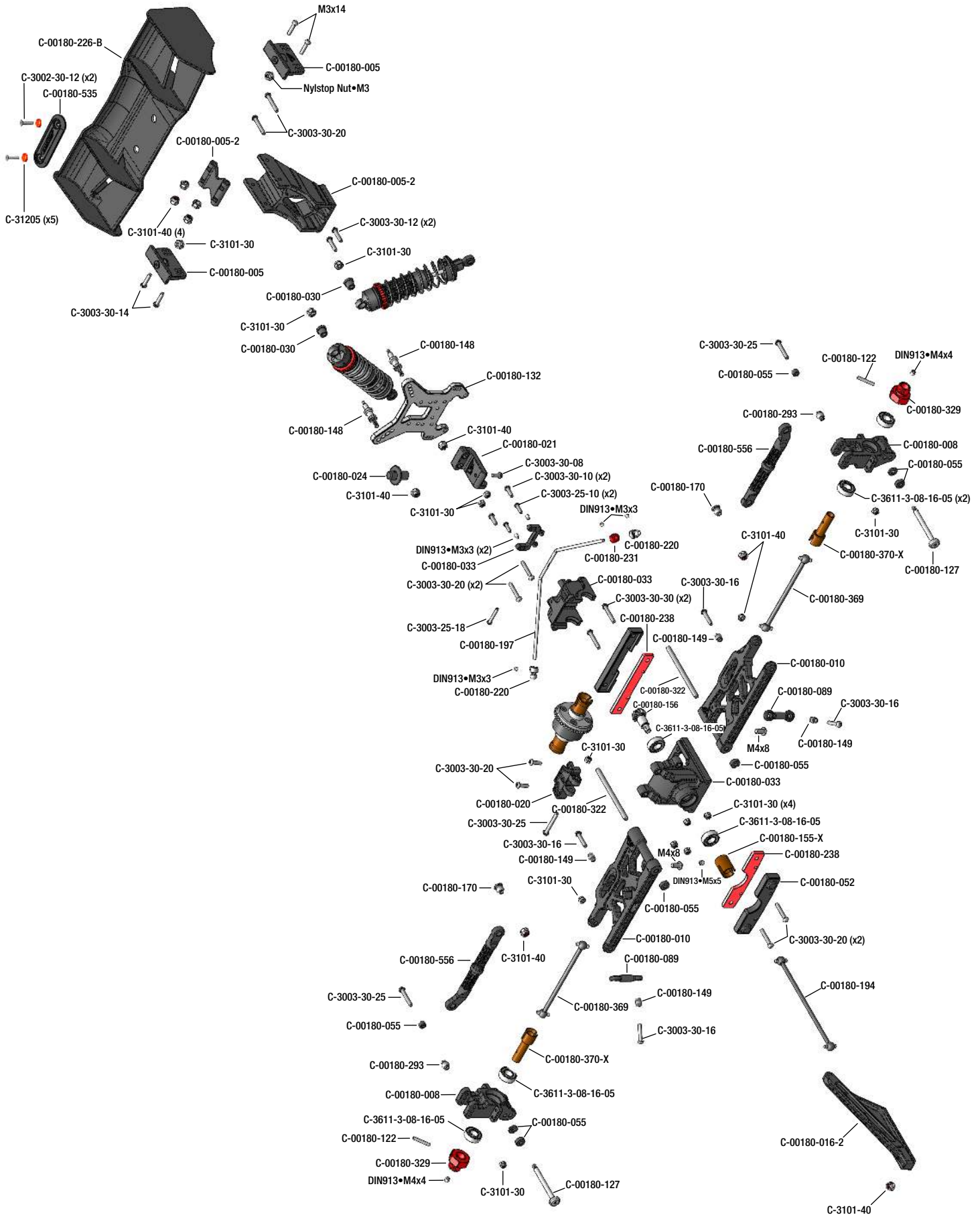
**CENTRE DIFFERENTIAL - DIFFÉRENTIEL CENTRAL - ZENTRALDIFFERENTIAL - CENTERDIFFERENTIEEL**



# FRONT DRIVE TRAIN - EXPLODED VIEW

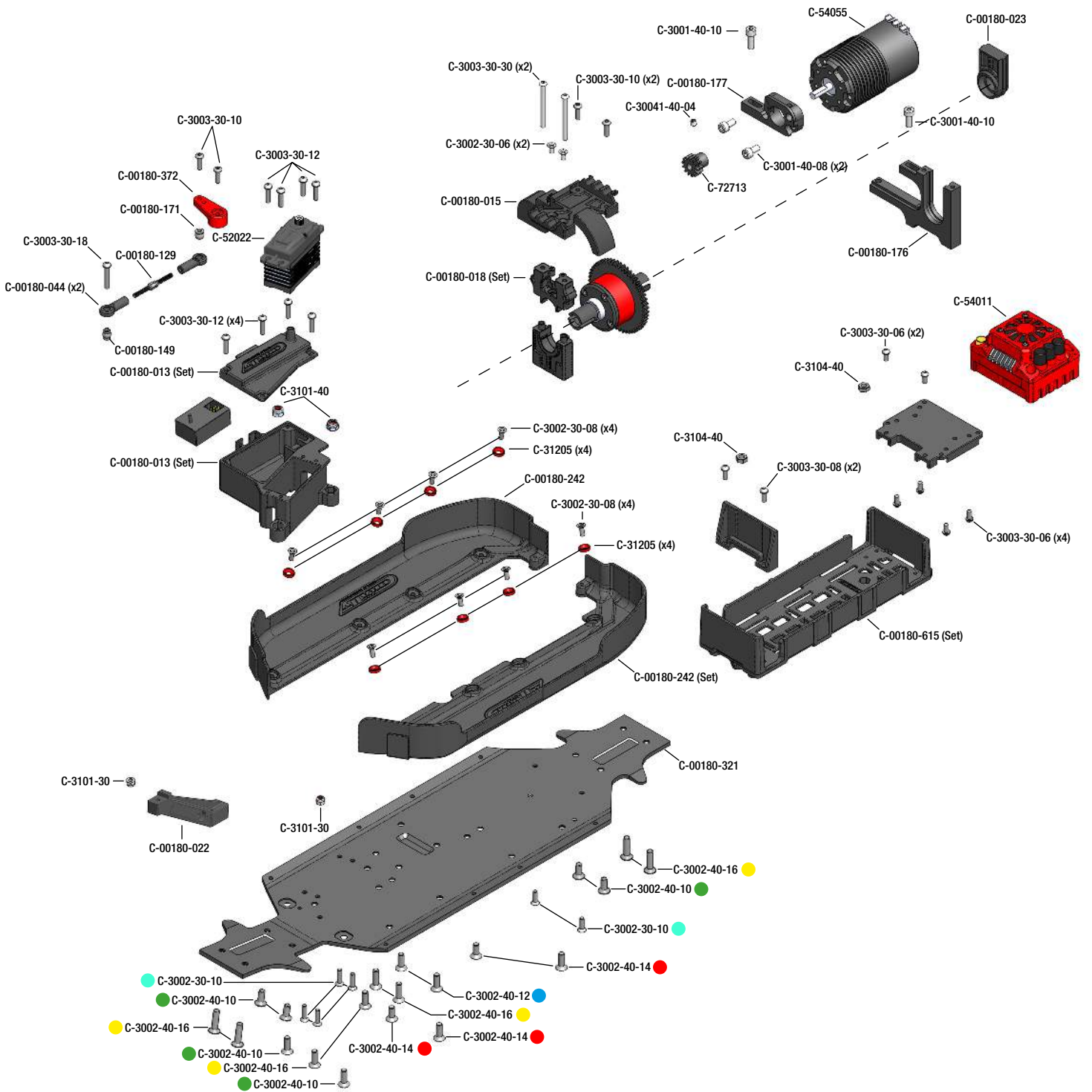


# REAR DRIVE TRAIN - EXPLODED VIEW





# CHASSIS - EXPLODED VIEW



# CHASSIS - SCREWS DESCRIPTION

- M3x10mm DIN7991  
#C-3002-30-10
- M3x12mm DIN7991  
#C-3002-30-12
- M4x10mm DIN7991  
#C-3002-40-10
- M4x12mm DIN7991  
#C-3002-40-12
- M4x14mm DIN7991  
#C-3002-40-14
- M4x16mm DIN7991  
#C-3002-40-16
- M4x20mm DIN7991  
#C-3002-40-20

